



STAMPI MOULDS

Stampi serie Gastronomia / Gastronomy mould set



BAULETTO



CODICE	Kg	L	W	H
OSBAU70500	2/3	500	70	70
OSBAU34	3/4	25	90	110
OSBAU45	4/5	268	141	168
OSBAU57	5/7	250	90	110
OSBAU280150	5/7	280	150	150
OSCB68RE	6/8	325	160	160
OSBAU280190	7/9	280	190	160



MAIALINO



CODICE	Kg	L	W	H
OSMAIALINO	4/5	475	160	125



CORONA



CODICE	Kg	L	W	H
OSCORONA	5/7	400	150	110



MDS PRAGA



CODICE	Kg	L	W	H
OSMDSPRAGA	7/9	275	245	190



CZ



CODICE	Kg	L	W	H
OSCZ	2/4	320	80	88



NEGRI



CODICE	Kg	L	W	H
OSNE79	6/8	270	235	170
OSNE68	6/8	260	225	160



FA



CODICE	Kg	L	W	H
OS2FA05	0,5	130	90	85
OS2FA08	0,8	130	98	90
OS3FA	0,8	255	100	90
OS3FAK1	0,8	150	100	85
OS2FA1	1	150	100	85



NOCETTA



CODICE	Kg	L	W	H
OSNOCETTA	3/5	215	155	125



GRIPO



CODICE	Kg	L	W	H
OSGRIP035	3/5	230	170	145



PAGNOTTA



CODICE	Kg	L	W	H
OSPAGNOTTA	4	295	140	120

Stampi serie Gastronomia / Gastronomy mould set



PHD



CODICE	Kg	L	W	H
OSPDH79	7/9	370	240	156



PECK



CODICE	Kg	L	W	H
OSPECK	3/5	218	190	88



RR



CODICE	Kg	L	W	H
OSRR68	6/8	270	220	135
OSRR810	8/10	330	230	155



SN



CODICE	Kg	L	W	H
OSSN46	4/6	180	145	145



ST



CODICE	Kg	L	W	H
OSST68POLONIA	1/2	130	120	80



TACCHINO



CODICE	Kg	L	W	H
OSTACCHINO1	4,5	300	190	170



TACCHINO 2



CODICE	Kg	L	W	H
OSTACCHINO2	2	417	165	135
OSTACCHINO25	3/4	343	170	135



TACCHINO FESA



CODICE	Kg	L	W	H
OSFESAPOLONIA	2,5	300	130	122



VB



CODICE	Kg	L	W	H
OSVB810	8/10	325	185	175



ZS



CODICE	Kg	L	W	H
OSZS1012	10/12	274	270	183

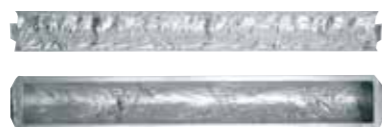
Stampi serie Gastronomia / Gastronomy mould set

COPPA



CODICE	Kg	L	W	H
OSCOPPA500	4,5/5,5	500	120	80

LOMBO



CODICE	Kg	L	W	H
OSLOMBO550	3/4	550	90	50
OSLOMBO750	3,5/4,5	750	90	80

Stampi serie Affettato / Sliced mould set

AFFETTATO



CODICE	Kg	L	W	H
OSAFF250210160	6/7	250	210	160
OSAFF250220160	7/8	250	220	160
OSAFF260205170	7/8	260	205	170
OSAFF270210140	6/7	270	210	140
OSAFF270225140	7/8	270	225	140
OSAFF270240140GSI	7/8	270	240	140
OSAFF280255145	8/9	280	255	145
OSAFF285280150	10/11	285	280	150
OSAFF290200	7/8	290	200	160
OSAFF290205120	6/7	290	205	120
OSAFF290205120	6/7	290	205	120
OSAFF310210140	8/9	310	210	140
OSAFF320220170R	10/11	320	220	170
OSAFF400200160	11/12	400	200	160
OSAFF400240160	13/14	400	240	160
OSAFF440205145	11/12	440	205	145
OSAFF500170150	11/12	500	170	150
OSAFF500200160	14/15	500	200	160
OSAFF500220160	15/16	500	220	160

FORME COPERCHIO / COVER SHAPES



AFFETTATO BARRA



CODICE	Kg	L	W	H
OSAFF530201150	15/16	530	210	150
OSAFF540205160	15/17	540	205	160
OSAFF600170165	16/17	600	170	165
OSAFF600190150	16/17	600	190	150
OSAFF750200160	21/22	750	200	160
OSAFF900170150	20/21	900	170	150
OSAFF900200150	24/25	900	200	150
OSAFF900205145	24/25	900	205	145

Stampi serie Toast / Toast moulds set (regular shape)

TOAST



CODICE	Kg	L	W	H
OSTOA200120110	2/4	200	120	110
OSTOA250110100	2/4	250	110	100
OSTOA170180140	3/4	180	170	140
OSTOA270160100	4/6	270	160	120
OSTOA270160140	4/6	270	160	140
OSTOA290130130	4/6	290	130	130
OSTOA280150150	5/7	280	150	150
OSTOA280160140	5/7	280	160	140
OSTOA290180130	5/7	290	180	130
OSTOA235180140	5/7	235	180	140
OSTOA270180140	6/8	270	180	140
OSTOA250220170R	8/10	250	220	170

CODICE	Kg	L	W	H
OSTOA3008585	2/3	300	85	85
OSTOA300100100	2/4	300	100	100
OSTOA300110140	4/6	300	110	140
OSTOA315120125	4/6	315	120	125
OSTOA320120120	4/6	320	120	125
OSTOA320160100	4/6	320	160	100
OSTOA360120110	4/6	360	120	110
OSTOA380110140	4/6	380	140	110
OSTOA310170130	5/7	310	170	130
OSTOA320160130	5/7	320	160	130
OSTOA300190130	6/8	300	190	130
OSTOA310210110	6/8	310	210	110
OSTOA310212110	6/8	310	212	110
OSTOA330185120	6/8	330	185	120
OSTOA350165130	6/8	350	165	130
OSTOA320120130	7/9	310	212	130
OSTOA350180140	7/9	350	180	140
OSTOA320200150	8/10	320	200	150
OSTOA330200140	8/10	330	200	140
OSTOA340190140	8/10	340	190	140
OSTOA380200120	8/10	380	200	120
OSTOA360210140	9/11	360	210	140
OSTOA380185150	9/11	380	185	150
OSTOA380200140	9/11	380	200	140

CODICE	Kg	L	W	H
OSTOA400100100	3/5	400	100	100
OSTOA430125110	4/5	430	125	110
OSTOA500100110	4/5	500	100	110
OSTOA9009595	6/7	900	95	95
OSTOA400180110	6/8	400	180	100
OSTOA450180110	7/9	450	180	110
OSTOA500170120LE	8/10	500	170	120

PANCETTA



CODICE	Kg	L	W	H
OSPANCETTA	8/10	450	210	110
OSPANCETTAALTO	10/12	450	210	130

Stampi serie Arrotolati / Rolled mould set



BRUCO



CODICE	Kg	L	W	H
OSBRUCO125400	5/7	400	125	105
OSBRUCO145450	7/9	450	145	130
OSBRUCO160460	8/10	460	160	145
OSBRUCO	10/12	540	175	140



CR



CODICE	Kg	L	W	H
OSCR79	7/9	300	160	156
OSCR810	8/10	300	180	160
OSCR911	9/11	310	210	175



ROULLÈ



CODICE	Kg	L	W	H
OSROU43080	3/4	430	80	98
OSROU60080	3/5	600	80	93
OSROU100450	4/6	450	100	110
OSROULLE'46	4/6	305	100	115
OSROU125450	5/7	450	125	120
OSROU145400	6/8	400	145	130
OSROU145450	7/9	450	145	130
OSROUCORTO	10/12	310	214	180



ROULLÈ BUGNATO



CODICE	Kg	L	W	H
OSROUBUGNATO	5/7	450	110	130



ROULLÈ GRAYSON



CODICE	Kg	L	W	H
OSROUGRYSON	5/7	260	165	130

Stampi serie Cotti linea 1 / Mould set Line 1



AS



CODICE	Kg	L	W	H
OSAS257	5/7	325	260	85
OSAS368	6/8	325	260	95
OSAS479	7/9	345	275	95
OSAS5810	8/10	345	275	110
OSAS61012	10/12	345	275	125
OSAS71214	12/14	345	275	150



ASC



CODICE	Kg	L	W	H
OSASC57	5/7	345	270	120
OSASC68	6/8	350	265	120
OSASC79	7/9	350	270	125



ASD



CODICE	Kg	L	W	H
OSASD157	5/7	340	265	100
OSASD279	7/9	340	265	120
OSASD3810	8/10	340	265	130
OSASD41012	10/12	345	265	140



MC



CODICE	Kg	L	W	H
OSMC79	7/9	260	250	125
OSMC810	8/10	275	260	135
OSMC1012	10/12	285	275	140

Stampi serie Cotti linea 2 / Mould set Line 2



ADDOBBO



CODICE	Kg	L	W	H
OSADD3M1	1	333	185	130
OSADD3M2	2	340	190	135
OSADD2M3	3	335	180	130
OSADD3M3	3	355	200	140
OSADD3M4	5	380	220	140
OSADDM2M4	4	330	210	160
OSADD3M2	2	340	190	135



ADDOBBO 3 MOLLE



CODICE	Kg	L	W	H
OSADD3M2	7/9	340	190	135
OSADD3M3	8/10	355	200	140

Stampi serie Cotti linea 3 / Mould set Line 3



ASSO



CODICE	Kg	L	W	H
OSASS01	8/10	235	235	175
OSASS02	9/11	250	250	180
OSASS03	11/13	250	260	190



AY



CODICE	Kg	L	W	H
OSAY79	7/9	315	220	160
OSAY810	8/10	315	235	160
OSAY1012	10/12	325	250	165



MAYD



CODICE	Kg	L	W	H
OSMAYD35	3/5	210	165	130
OSMAYD46	4/6	245	190	120
OSMAYD57	5/7	255	210	140
OSMAYD68	6/8	260	225	155
OSMAYD79	7/9	270	235	160
OSMAYD810	8/10	280	245	160
OSMAYD1012	10/12	300	260	170



MAYD RIGATO



CODICE	Kg	L	W	H
OSMAYDR35	3/5	210	165	130
OSMAYDR46	4/6	245	190	120
OSMAYDR57	5/7	255	210	140
OSMAYDR68	6/8	260	225	155
OSMAYDR79	7/9	270	235	160
OSMAYDR810	8/10	280	245	160
OSMAYDR1012	10/12	300	260	170



MB



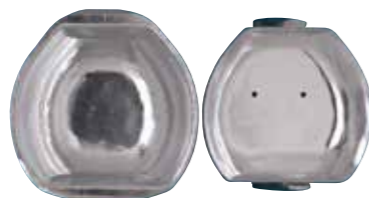
CODICE	Kg	L	W	H
OSMB68	6/8	250	210	145
OSMB79	7/9	265	220	165

Stampi serie Cotti linea 3 / Mould set Line 3

Stampi serie Cotti linea 4 / Mould set Line 4



NOCE



CODICE	Kg	L	W	H
OSNOCE79	7/9	235	255	155
OSNOCE810	8/10	268	250	165



PP



CODICE	Kg	L	W	H
OSPP79	7/9	245	225	175
OSPP1011	10/11	242	255	195



RPP



CODICE	Kg	L	W	H
OSRPP810	8/10	235	255	175



ST



CODICE	Kg	L	W	H
OSST68	6/8	240	225	150



G



CODICE	Kg	L	W	H
OSG46	4/6	275	210	130
OSG57	5/7	290	215	130
OSG68	6/8	295	235	130
OSG79	7/9	305	240	145
OSG810	8/10	310	250	140
OSG1012	10/12	315	255	135



MTU



CODICE	Kg	L	W	H
OSMTU57	5/7	260	200	140



SL



CODICE	Kg	L	W	H
OSSL46	4/6	260	190	130
OSSL57	5/7	275	215	140
OSSL67	6/7	300	227	140
OSSL68	6/8	295	220	135
OSSL79	7/9	310	230	140
OSSL810	8/10	310	240	145
OSSL89	8/9	310	245	145
OSSL1011	10/11	305	260	160
OSSL1012	10/12	313	260	155
OSSL10123MOLLE	10/12	313	263	170
OSSL11	11	320	270	165



SL1



CODICE	Kg	L	W	H
OSSL1	1,800	170	130	110

Stampi serie Cotti linea 4 / Mould set Line 4

Stampi serie Cotti linea 5 / Mould set Line 5



SL2-SL2/4



CODICE	Kg	L	W	H
OSSL2	2,500	180	140	100
OSSL24	2/4	176	145	105



MF



CODICE	Kg	L	W	H
OSMF57	5/7	285	225	135
OSMF68	6/8	290	235	155
OSMF79	7/9	290	235	155
OSMF810	8/10	300	245	160
OSMF1012	10/12	310	245	160
OSMF1214	12/14	310	260	160



SLM



CODICE	Kg	L	W	H
OSSLM79	7/9	270	235	150
OSSLM810	8/10	280	245	160



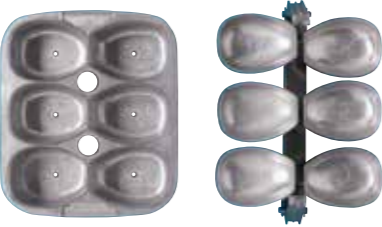
MFB



CODICE	Kg	L	W	H
OSMFB79	7/9	290	235	145
OSMFB810	8/10	310	285	158



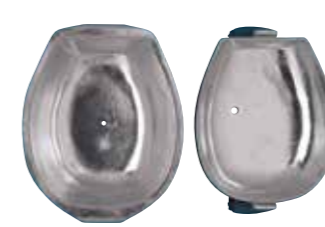
SNELLO



CODICE	Kg	L	W	H
OSSNELLO	0,8/1,2	130	100	75



MFC



CODICE	Kg	L	W	H
OSMFC57	5/7	250	210	140
OSMFC79	7/9	275	235	155



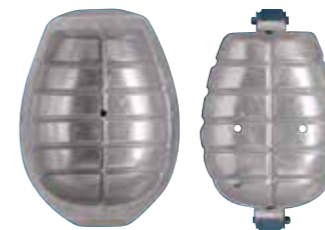
TT



CODICE	Kg	L	W	H
OSTT57	5/7	255	200	120
OSTT68	6/8	255	210	130
OSTT79	7/9	260	225	135
OSTT810	8/10	270	235	155



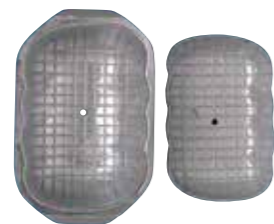
MFC RIGATO



CODICE	Kg	L	W	H
OSMFC24	2/4	210	175	130



TAC 35



CODICE	Kg	L	W	H
OSTAC35	3/5	235	155	110



MFM



CODICE	Kg	L	W	H
OSMFM79	7/9	260	240	155
OSMFM810	8/10	275	250	162

Stampi serie Cotti linea 6 / Mould set Line 6



VIS



CODICE	Kg	L	W	H
OSVIS79	7/9	260	225	135
OSVIS810	8/10	283	230	170



MR



CODICE	Kg	L	W	H
OSMR68	6/8	295	250	125
OSMR79	7/9	300	260	125
OSMR810	8/10	315	270	125



MRC



CODICE	Kg	L	W	H
OSMRC57	5/7	217	260	132
OSMRC68	6/8	290	260	130
OSMRC79	7/9	310	265	135



SLV



CODICE	Kg	L	W	H
OSSLV35	3/5	230	205	95
OSSLV46	4/6	280	230	100
OSSLV57	5/7	295	245	110
OSSLV68	6/8	300	255	120
OSSLV79	7/9	310	265	120
OSSLV810	8/10	310	265	125
OSSLV1012	10/12	330	280	140

Stampi serie Cotti linea 7 / Mould set Line 7



CB



CODICE	Kg	L	W	H
OSCB68	6/8	325	160	160
OSCB79	7/9	270	255	165
OSCB810	8/10	280	265	175



GM



CODICE	Kg	L	W	H
OSGM68	6/8	235	250	155
OSGM79	7/9	245	260	170
OSGM810	8/10	255	265	170



GP



CODICE	Kg	L	W	H
OSGP68	6/8	260	260	150
OSGP810	8/10	275	255	170



GPM



CODICE	Kg	L	W	H
OSGPM1012	10/12	260	255	190



MX



CODICE	Kg	L	W	H
OSXM68	6/8	225	250	160
OSXM79	7/9	235	260	167
OSXM810	8/10	245	270	170
OSXM911	9/11	245	270	180
OSXM1012	10/12	245	270	185
OSXM1113	11/13	250	270	185
OSXM1214	12/14	255	280	185
OSXM1315	13/15	275	290	190

Stampi serie Cotti linea 7 / Mould set Line 7



PR



CODICE	Kg	L	W	H
OSPR79	7/9	260	250	170
OSPR1012	10/12	270	260	160



RBN



CODICE	Kg	L	W	H
OSRBN0	5/5,5	225	255	165
OSRBN1	5,5/5,8	230	260	168
OSRBN2	5,8/6	236	262	168
OSRBN3	6/6,3	240	270	170
OSRBN4	6,3/6,8	240	273	170
OSRBN5	6,8/7,2	247	275	175
OSRBN6	7,5/8	252	272	176
OSRBN7	8,5/9	260	275	175
OSRBN8	9/10	240	280	176
OSRBN9	10/12	270	285	170



SG



CODICE	Kg	L	W	H
OSSG57	5/7	255	235	150
OSSG68	6/8	265	245	155
OSSG79	7/9	280	255	160
OSSG810	8/10	285	260	165
OSSG1012	10/12	280	260	165



SMP



CODICE	Kg	L	W	H
OSSMP1012	10/12	315	245	155
OSSMP1214	12/14	290	255	165
OSSMP1315	13/15	295	265	190

Stampi serie Cotti linea 8 / Mould set Line 8



BOTTICELLA MML



CODICE	Kg	L	W	H
OSBOTTICELLA68	6/8	225	240	145
OSBOTTICELLA79	7/9	235	260	155
OSBOTTICELLA810	8/10	235	270	160
OSBOTTICELLA1012	10/12	250	272	165



P



CODICE	Kg	L	W	H
OSP5	5/7	270	240	130
OSP6	6/8	275	245	135



SFL



CODICE	Kg	L	W	H
OSSF5	5	265	235	145
OSSF56	5/6	270	235	160
OSSF6	6	280	250	150
OSSF67	6/7	290	255	170
OSSF7	7	290	265	175
OSSF8	8	290	260	170



SFL BUGNATO



CODICE	Kg	L	W	H
OSSF BUGNATO	8/10	259	230	150



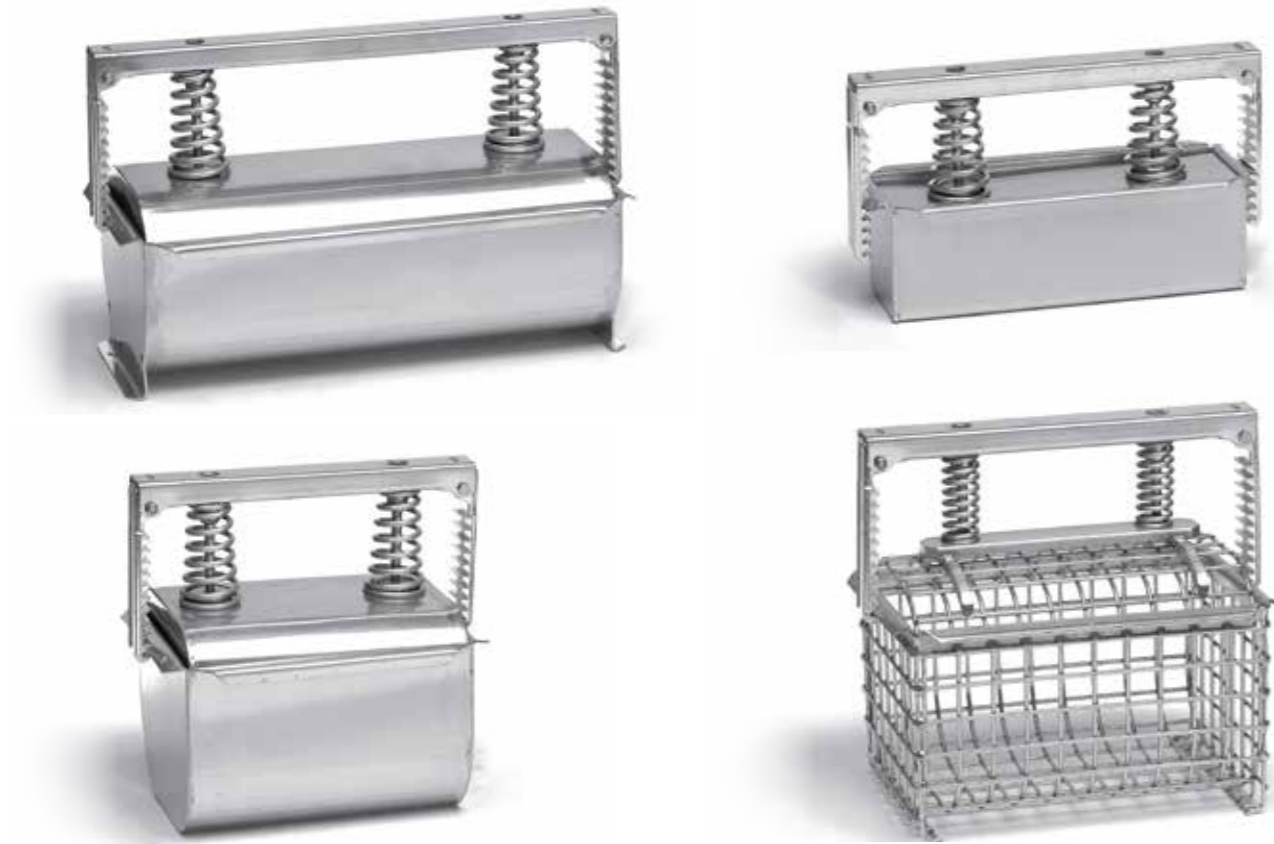
SFL P



CODICE	Kg	L	W	H
OSSF P	11/13	280	245	178

Stampi in acciaio su richiesta / Stainless steel moulds on request

Stampi a torre / Multi-moulds



Dati tecnici Technical note

Stampi in alluminio per cottura cosce e spalle
Aluminium moulds to cook boned hams and shoulders

Caratteristiche tecniche Technical Characteristics

Fusioni in alluminio - Aluminium casting
Capitolato - Specification
UNI EN 1676:1998

Norma - Standard:

EN AB-51000

Legg - Alloy:

AlMg

Designazione Simboli Chimici

Designation of Chemical Symbols:

EN AB - AlMg3(B)

Corrispondenza UNI -Uni correspondence:

Norma - Standard 3059

Componente	Min %	Max %
Si		0,45
Fe		0,45
Cu		0,08
Mn		0,45
Mg	2,7	3,5
Zn		
Ni		
Pb		
Sn		
Altri (ciascuno)	0,05	
Al	resto	resto

Componente	Min %	Max %
Ti		0,15
Cr		
Sr		
Be		
Ca		
Na		
P		
Li		
Sb		
Altri (totale)	0,15	
Al	resto	resto

Manici in acciaio inox AISI 304
Handles of AISI 304 stainless steel

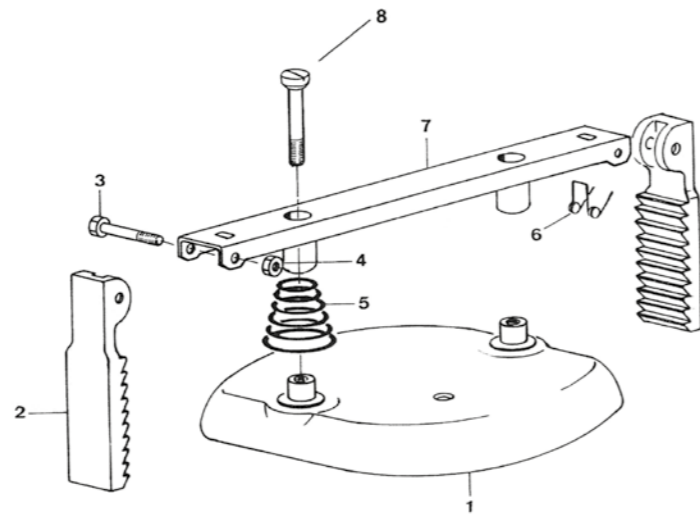
Bulloneria di assemblaggio in acciaio austenitico classe A2 (X2CrNi18 11; X5 CrNi 18 10; X8 CrNi 18 12)

Nuts and bolts for assembly purposes of class A2 austenitic steel (X2CrNi18 11; X5 CrNi 18 10; X8 CrNi 18 12)

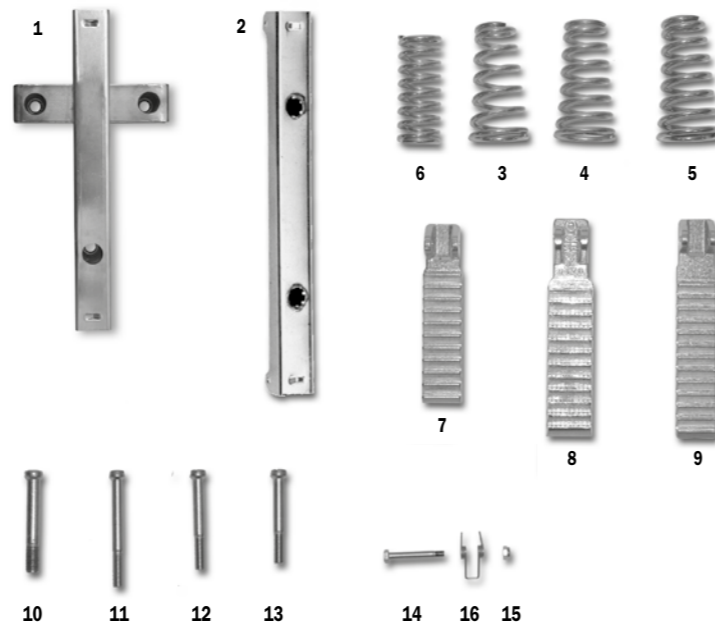
Gremagliere forgiate in alluminio lega AST 6082
Forged racks of AST 6082 aluminium alloy

Molle in acciaio austenitico in AISI 302
Spring of AISI 302 austenitic steel

Ricambi/ Spare parts



- 1 Coperchio / Cover
2 Cremagliera / Forged rack
3 Bullone 6 x 45 inox / Bolt 6 x 45 stainless steel
4 Dado 6-MA inox autobloccanti / Self-locking hexagon nut M. 6 of stainless steel
5 Molla / Spring
6 Molla a doppia torsione per cremagliera / Spring whit double eyelet for rack Handle of stainless steel
8 Bullone inox: testa tonda 3/8 L= 70/75/90 • 12-MA L= 75/85 / Roundhead bolt 3/8 L= 70/75/90 • 12-MA L= 75/85



1	Manico 2 boccole	Handle 2 bushes
2	Manico 3 boccole	Handle 3 bushes
3	2SMOLL52CON Molla conica filo 5,2 mm	Conical spring wire ø 5,2 mm
4	2SMOLL55CON Molla conica filo 5,5 mm	Conical spring wire ø 5,5 mm
5	2SMOLL6CON Molla conica filo 6 mm	Conical spring wire ø 6,0 mm
6	2SMOLL5CIL Molla cilindrica filo 5 mm	Cylindrical spring wire ø 5,0 mm
7	2SGRE11 Gremagliera 11 denti forgiata	Forged rack 11 teeth
8	2SGRE12 Gremagliera 12 denti M2 Z15	Forged rack 12 teeth
9	2SGRE13 Gremagliera 13 denti forgiata	Forged rack 13 teeth
10	2SVITE1283 Vite TC 12 x 85	Bolt parallel head M. 12 x 85
11	2SVITE3870 Vite TC 3/8 x 90	Bolt parallel head M. 3/8 x 90
12	2SVITE3875 Vite TC 3/8 x 75	Bolt parallel head M. 3/8 x 75
13	2SVITE3890 Vite TC 3/8 x 70	Bolt parallel head M. 3/8 x 70
14	56452355 Vite TE 6 x 45 fil. 7 mm	Hexagon head bolt M. 6 x 45 x 7 mm
15	56985 Dado M 6 autoblock	Self-locking hexagon nut M. 6
16	2SMOLL000 Molla a doppio occhiello	Spring whit double eyelet



Pressa semiautomatica per chiusura e apertura stampi Semiautomatic press to close and open moulds

- Struttura in acciaio inox AISI 304
- Piano di lavoro in plastica atossica
- Protezione antispruzzo in policarbonato trasparente
- Pressione regolabile fino a 688 Kg
- Piano di lavoro registrabile
- Comando di azionamento bimanuale
- Produzione massima 250 pz/h

- Main structure made of AISI 304 stainless steel
- Working surface made of food contact grade plastic material
- Anti-spray guard of transparent polycarbonate
- Adjustable pressure up to 688 kg
- Adjustable work table
- Two-hand-control
- Maximum production output 250 pieces/h



Pressa automatica per chiusura stampi Automatic press to close moulds

- Struttura in acciaio inox AISI 304
- Nastro di avanzamento stampo in acciaio inox AISI 304
- Nastro motorizzato con controllo e posizionamento stampo in automatico
- Pannello di controllo touch screen IP69K
- Sportello principale con protezione in policarbonato trasparente e molle a gas
- Produzione massima 500pz/h

- Main structure made of AISI 304 stainless steel
- In-feed conveyor belt made of AISI 304 stainless steel
- Motorized conveyor belt with control and automatic mould positioning
- Control panel: touch screen IP69K
- Main hatch with transparent polycarbonate window and gas springs
- Maximum production output 500 pieces/h



Distampatrice automatica per apertura stampi Automatic demoulding machine to open moulds

- Struttura in acciaio inox AISI 304
- Nastro di avanzamento stampo in acciaio inox AISI 304
- Nastro motorizzato con controllo e posizionamento stampo in automatico
- Divisione automatica del prodotto, vasca stampo e coperchio stampo
- Regolazioni semplici e veloci per ogni tipo di stampo
- Sportelli con molle a gas
- Produzione massima 450 pz/h

- Main structure made of AISI 304 stainless steel
- In-feed conveyor belt made of AISI 304 stainless steel
- Motorized conveyor belt with control and automatic mould positioning
- Automatically separated out-feed of the product, of the mould lid and of the mould pot
- Easy and quick adjustment to each kind of mould
- Hatches equipped with gas spring
- Maximum production output 450 pieces/h



MENOZZI LUIGI & C. SPA
Via Roma 24/A - 42020 Albinea (R.E.) - Italy
Tel. +39.0522.35471/354747 - Fax. +39.0522.59974
info@menozzi.com - www.menozzi.com